

Slide 1



---

---

---

---

---

---

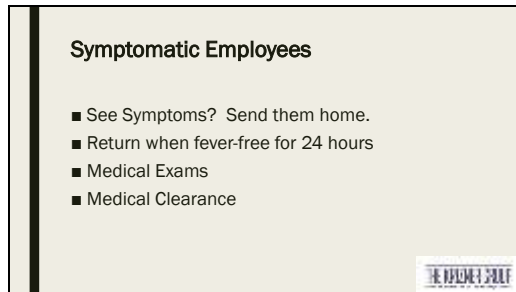
---

---

---

---

Slide 2



---

---

---

---

---

---

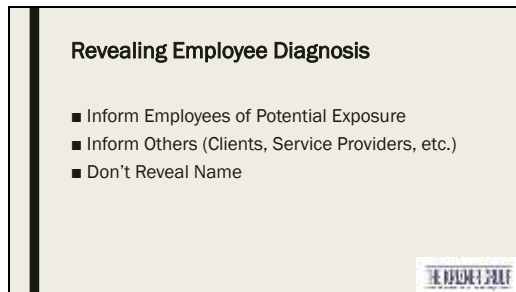
---

---

---

---

Slide 3



---

---

---

---

---

---

---

---

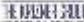
---

---

Slide 4

**Employees Exposed to Coronavirus**

- Send them home.
- 14-day Isolation From Work
  - *Paid or Unpaid*
  - *Work from Home*



---

---

---

---

---

---


---

---

Slide 5

**Employees Returning From Travel**

- 14-Day Isolation From Work If
  - *Foreign travel*
  - *Domestic travel involving air travel*
  - *Cruises*



---

---

---

---

---

---


---

---

Slide 6

**Telework**

- Appropriate accommodation, says DOL
- Job Description
- Expectations
- Policy
- Agreement



---

---

---

---

---

---


---

---

Slide 7

**Returning Employees**

- Fever-free for 24 hours (Allow, Don't Require.)
- Medical Clearance
- Protect Employee Health Information
- Other Restrictions



---

---

---

---

---

---


---

---

Slide 8

**Employees Refuse to Report to Work**

- School Closings
- Fear
- Telework
- Paid or Unpaid



---

---

---

---

---

---


---

---

Slide 9

**Work Interruptions**

- Temporary Closings
  - *Paying Employees*
- Layoffs
  - *Document and Date Decisions*
  - *Review for Disparate Impact*



---

---

---

---

---

---


---

---

Slide 10

**Families First Coronavirus Response Act**

- Emergency Paid Sick Leave
- Paid Leave for 12 Weeks to Care for Child
- Unemployment Compensation
- Free COVID-19 Testing



---

---

---

---

---

---

---


---

Slide 11

**QUESTIONS?**

Need More Info?

Joyce Chastain  
The Krizner Group  
850-386-3747



---

---

---

---

---

---

---

---